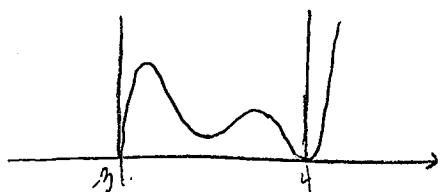


What is a sign chart? _____

to solve $f(x) > 0$ _____

to solve $f(x) < 0$ _____



Complete the following diagram found
on page 237

You try: Use your knowledge of end behavior & multiplicity of real zeros
to create a sign chart of $f(x) = 2(x-2)^3(x+3)^2$

Designing a box: Dixie Packaging Co. has contracted with a firm to design boxes with a volume of at least 565 in^3 . Squares will be cut from each corner of a $20''$ by $25''$ piece of cardboard, with the flaps folded up to make an open box. What size squares should be cut from the corners?